



*running for excellence*

27

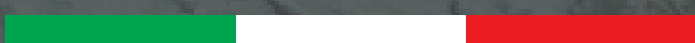
YEARS OF ACTIVITY  
IN THE SANITARY  
BUSINESS



ISH

COME AND VISIT US AT  
HALLE 1.1 STAND G01  
FRANKFURT AM MAIN - 11/15 MARCH 2019

MADE IN ITALY



## Completion of the product range

### ABS

A range of non-coextruded ABS products is available in the following versions:  
LAC 500  
LAC 500 MO

This product range is ideal for the production of reinforcement panels for bathtubs and shower trays.

Options:



### POLYSTYRENE

A range of non-coextruded PS products is available in the following versions:  
MP STIR L (glossy)  
MP STIR GD (embossed)  
MPK7 (PS/PE greater resistance to chemical agents)

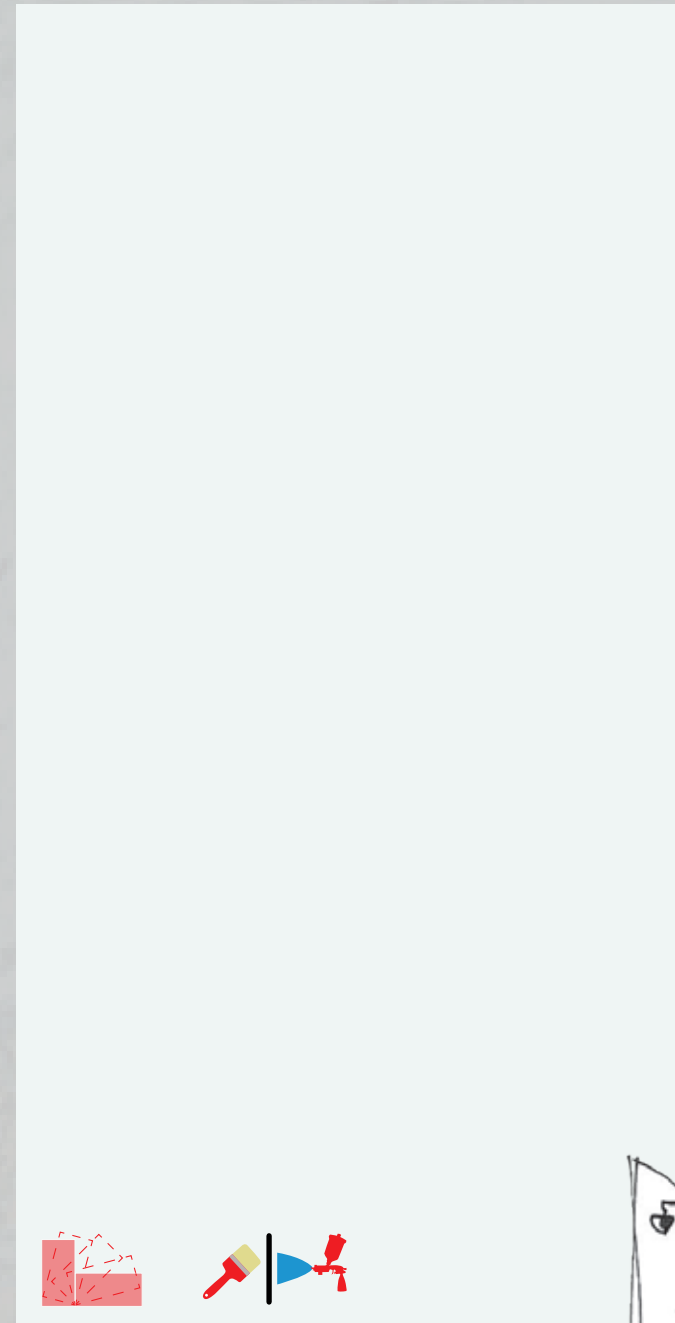
This product range is ideal for the production of reinforcement panels for bathtubs and shower trays.

Options:



## ACRYLAC (ABS/PMMA)

Sheet produced by the extrusion of several layers using ABS and PMMA. ABS, the predominant and lower layer, provides consistency to the sheet (mechanical strength), while PMMA, which is in the upper layer, provides the aesthetic appearance (gloss and color) together with great chemical resistance to atmospheric agents and UV rays.

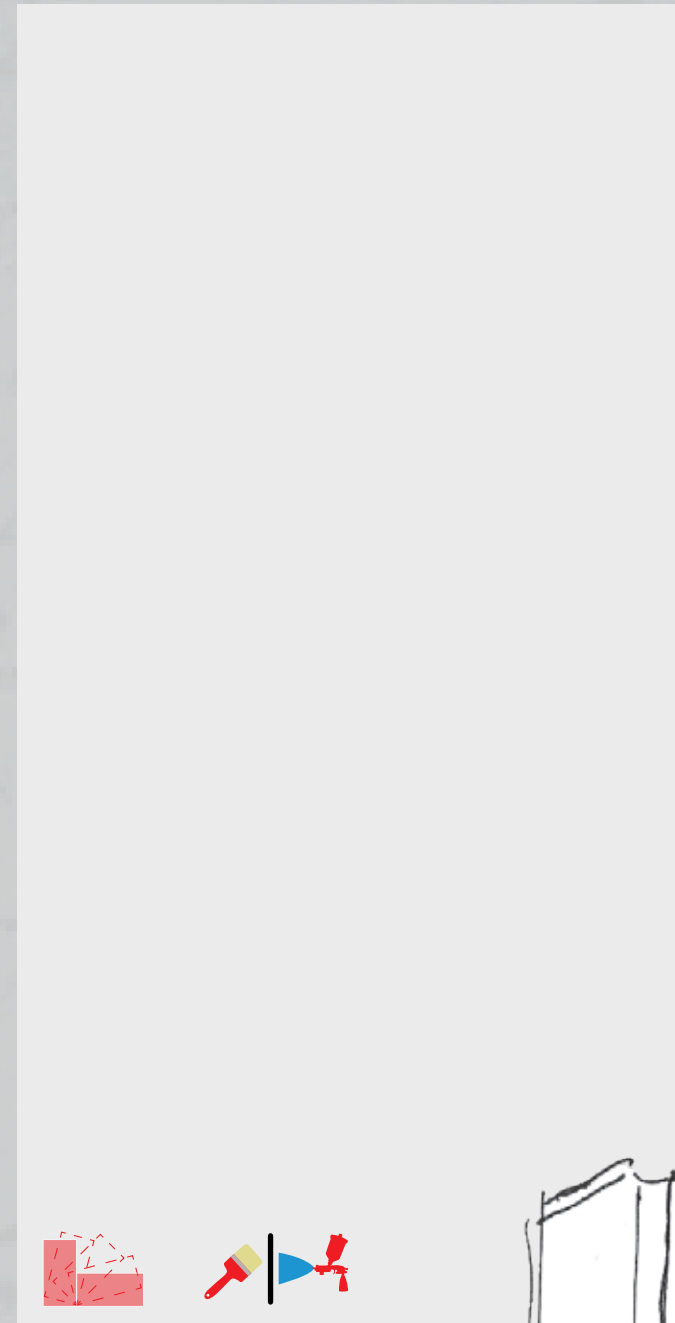
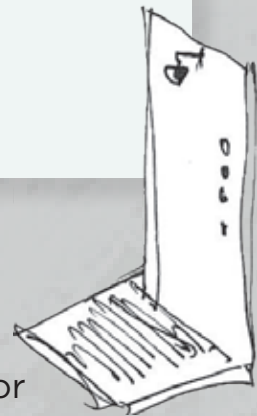


### ACRYLAC PX 500

Color: MP 5067  
MP3 White

This type of sheet is ideal for standard bathtubs, shower trays/columns and panels.

Options:



### ACRYLAC PX 500 PX

Color: MP 5058  
European White

This type of sheets is ideal for bathtubs and shower boxes.

Options:



## Quality

PROGETTO  
ZERO

### Quality team

1 quality manager  
1 quality assurance manager  
11 people dedicated to product quality assurances

### Continuous improvement

Lean manufacturing System operating since 2009 in all company's departments.

### Safety assurance

Company mission: the safety of the working environment is our priority. Created a new project: MP3 Total safety project with a team dedicated.



EN 13559  
Adequate chemical  
resistance



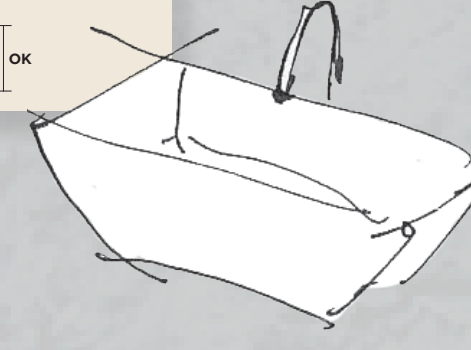
### ACRYLAC PX 500 MO

Color: MP 5316  
Pergamon

Finishing MO

This type of sheet is ideal for design and deep thermoforming bathtubs.

Options:



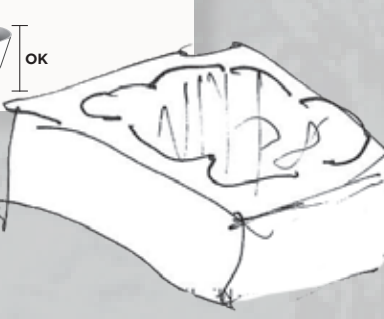
### ACRYLAC TX 600 MO

Color: MP 5071  
White/White

Finishing MO

This type of sheet is ideal for outdoor whirlpool tubs with deep thermoforming

Options:



## Key



**MATT**  
Available in the matt version for high-design niche products.



**ANTI UV - OUTDOOR**  
A special polymer treatment is available, that allows the finished product to be suitable for outdoor positioning, thanks to its high UV rays resistance.



**ANTIBACTERIAL**  
A special treatment based on zinc salts is available to prevent the growth of bacteria on the finished product.



**ANTI-SLIP**  
An anti-slip kit to be spread on the finished product is available.



**REINFORCEMENT**  
Sheets suitable for a type of reinforcing of the thermoformed product both with polyester resin and with polyurethane resin.

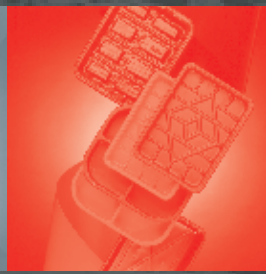
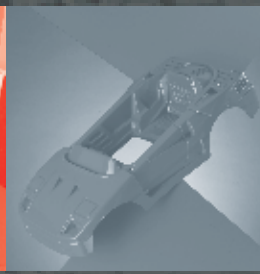


**DEPTH OF THERMOFORMING**  
The special MO finish also called Easy Shaping allows the thermoforming of these sheets in models with "elaborate" design, and / or with deep thermoforming.



**VERSATILE STRUCTURES**  
Sheets produced with a technology that allows excellent thermoforming results with horizontal and/or vertical thermoforming machines.

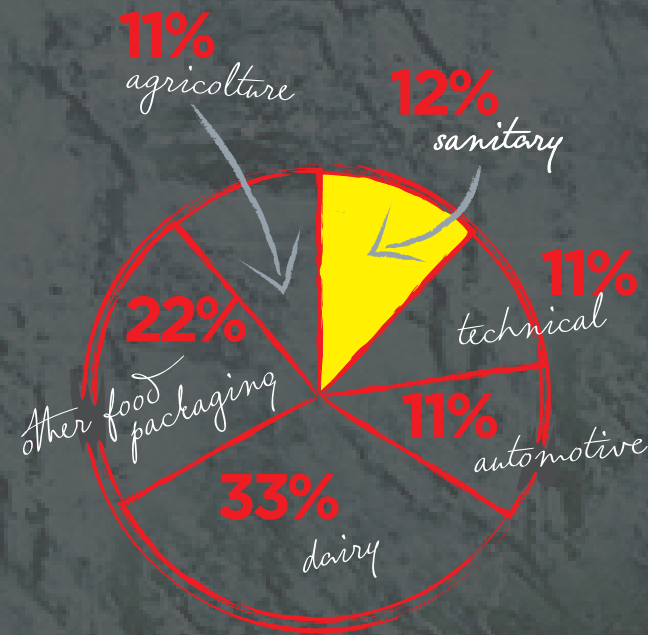




## *running for excellence*

Established in Italy in 1978 MP3 has concentrated its growth in the strategic sectors of the industrial markets; in many of which is today among the European market leaders (eg. automotive, sanitary, caravan, household-appliances and food sectors). Our plants are among the most modern in the industry and are the result of ongoing technological research, backed up by the most advanced electronic systems for the management and control of the production.

With the new **45000 sqm** facility located on an area of **80000 sqm**, the company's production capacity currently exceeds **78000 ton/year** with plenty of room for further growth. **Over 72% of the production is now exported**. Stringent quality controls are made in every stage of the process, from incoming raw materials to the delivery to customers. In many cases, the materials for special applications are developed in conjunction with the customer itself to better meet the market requirements.



**191**  
*employees*

**125** *millions of euro invested in the last 15 years*

**78K** *tons of polymers capacity*

**123**  
*countries where we export*

**MP3 srl**  
VIA MUZZA SPADETTA, 36  
40053 VALSAMOGGIA (BO)  
LOC. BAZZANO - ITALY -  
TEL. +39 051 6715 811  
FAX +39 051 6715 907  
**INFO@ILPA-MP3.COM**



**16 - 23**  
**OCTOBER**  
**2019**  
**DUSSELDORF**  
**GERMANY**

**WWW.ILPA-MP3.COM**

**HALLE 8/A STAND C31**

linkedin = <https://www.linkedin.com/company/mp3-s.r.l/>